



Size: 2in x 1in x 0.40in
(50.8mm x 25.4mm x 10.2mm)

FEATURES

- 4:1 Input Range or 2:1 Input Range
- 5000VAC Reinforced Insulation
- Low Leakage Current
- Low Standby Power
- No Minimum Load Required
- Remote ON/OFF Positive or Negative Logic
- 2xMOPP
- 5000 Meter Operating Altitude
- Over Voltage, Over Load, Over Temperature, and Short Circuit Protection
- Non-Conductive Black Plastic Case
- RoHS & REACH Compliant
- Internal EN55032 Class A Filter
- IEC/EN/ANSI/AAMI ES 60601-1 and IEC/EN/UL 60950-1, 62368-1 and CB: UL (Demko) Safety Approvals

APPLICATIONS

- Medical
- PV
- Automation
- Datacom
- IPC
- Industry
- Measurement
- Telecom

DESCRIPTION

The DCMHIR30 series of DC/DC converters offers up to 30 watts of output power in a very compact 2" x 1" x 0.40" through hole package. This series consists of single and dual output models with either a 2:1 input range or 4:1 input range. Each model features low leakage current and standby power, 5000VAC reinforced isolation, no minimum load requirement, and remote on/off with positive or negative logic. The DCMHIR30 series also has protection against over voltage, over load, over temperature, and short circuit conditions and is RoHS and REACH compliant. This series has IEC/EN/ANSI/AAMI ES 60601-1 and IEC/EN/UL 60950-1, 62368-1 and CB: UL (Demko) safety approvals.

MODEL SELECTION TABLE

Single Output Models

Model Number	Input Voltage Range	Output Voltage	Output Current	No Load Input Current	Ripple & Noise	Maximum Capacitive Load	Efficiency	Output Power
DCMHIR30-12S05	12VDC (9~18VDC)	5VDC	6A	9mA	50mVp-p	7200µF	88.5%	Up to 30W
DCMHIR30-12S12		12VDC	2.5A	10mA	75mVp-p	1200µF	88.5%	
DCMHIR30-12S15		15VDC	2A	12mA	100mVp-p	1000µF	89.5%	
DCMHIR30-12S24	24VDC (18~36VDC)	24VDC	1.25A	11mA	100mVp-p	375µF	89%	Up to 30W
DCMHIR30-242S05		5VDC	6A	8mA	50mVp-p	7200µF	88.5%	
DCMHIR30-242S12		12VDC	2.5A	10mA	75mVp-p	1200µF	89%	
DCMHIR30-242S15	24VDC (18~36VDC)	15VDC	2A	9mA	100mVp-p	1000µF	90.5%	Up to 30W
DCMHIR30-242S24		24VDC	1.25A	9mA	100mVp-p	375µF	89.5%	
DCMHIR30-244S05		5VDC	6A	9mA	50mVp-p	7200µF	88.5%	
DCMHIR30-244S12	24VDC (9~36VDC)	12VDC	2.5A	10mA	75mVp-p	1200µF	89%	Up to 30W
DCMHIR30-244S15		15VDC	2A	10mA	100mVp-p	1000µF	90.5%	
DCMHIR30-244S24		24VDC	1.25A	10mA	100mVp-p	375µF	89.5%	
DCMHIR30-482S05	48VDC (36~75VDC)	5VDC	6A	8mA	50mVp-p	7200µF	89%	Up to 30W
DCMHIR30-482S12		12VDC	2.5A	9mA	75mVp-p	1200µF	89%	
DCMHIR30-482S15		15VDC	2A	8mA	100mVp-p	1000µF	90%	
DCMHIR30-482S24	48VDC (18~75VDC)	24VDC	1.25A	9mA	100mVp-p	375µF	89%	Up to 30W
DCMHIR30-484S05		5VDC	6A	8mA	50mVp-p	7200µF	89%	
DCMHIR30-484S12		12VDC	2.5A	9mA	75mVp-p	1200µF	89%	
DCMHIR30-484S15	48VDC (18~75VDC)	15VDC	2A	8mA	100mVp-p	1000µF	90%	Up to 30W
DCMHIR30-484S24		24VDC	1.25A	9mA	100mVp-p	375µF	89%	

MODEL SELECTION TABLE

Dual Output Models

Model Number	Input Voltage Range	Output Voltage	Output Current	No Load Input Current	Ripple & Noise	Maximum Capacitive Load	Efficiency	Output Power
DCMHIR30-12D05	12VDC (9~18VDC)	±5VDC	±3A	13mA	50mVp-p	±3600µF	86%	Up to 30W
DCMHIR30-12D12		±12VDC	±1.25A	11mA	75mVp-p	±750µF	88.5%	
DCMHIR30-12D15		±15VDC	±1A	13mA	75mVp-p	±500µF	89%	
DCMHIR30-242D05	24VDC (18~36VDC)	±5VDC	±3A	10mA	50mVp-p	±3600µF	86%	Up to 30W
DCMHIR30-242D12		±12VDC	±1.25A	9mA	75mVp-p	±750µF	90%	
DCMHIR30-242D15		±15VDC	±1A	10mA	75mVp-p	±500µF	90%	
DCMHIR30-244D05	24VDC (9~36VDC)	±5VDC	±3A	10mA	50mVp-p	±3600µF	86%	Up to 30W
DCMHIR30-244D12		±12VDC	±1.25A	10mA	75mVp-p	±750µF	89.5%	
DCMHIR30-244D15		±15VDC	±1A	9mA	75mVp-p	±500µF	90%	
DCMHIR30-482D05	48VDC (36~75VDC)	±5VDC	±3A	9mA	50mVp-p	±3600µF	86.5%	Up to 30W
DCMHIR30-482D12		±12VDC	±1.25A	9mA	75mVp-p	±750µF	90%	
DCMHIR30-482D15		±15VDC	±1A	8mA	75mVp-p	±500µF	89.5%	
DCMHIR30-484D05	48VDC (18~75VDC)	±5VDC	±3A	9mA	50mVp-p	±3600µF	86.5%	Up to 30W
DCMHIR30-484D12		±12VDC	±1.25A	9mA	75mVp-p	±750µF	90%	
DCMHIR30-484D15		±15VDC	±1A	8mA	75mVp-p	±500µF	89.5%	

SPECIFICATIONS

All specifications are based on 25°C, Nominal Input Voltage, and Full Load unless otherwise noted.
We reserve the right to change specifications based on technological advances.

SPECIFICATION	TEST CONDITIONS		Min	Typ	Max	Unit
INPUT SPECIFICATIONS						
Input Voltage Range	2:1	12Vin(nom)	9	12	18	VDC
		24Vin(nom)	18	24	36	
		48Vin(nom)	36	48	75	
	4:1	24Vin(nom)	9	24	36	VDC
		48Vin(nom)	18	48	75	
Start-Up Voltage	2:1	12Vin(nom)			9	VDC
		24Vin(nom)			18	
		48Vin(nom)			36	
	4:1	24Vin(nom)			9	VDC
		48Vin(nom)			18	
Shutdown Voltage	2:1	12Vin(nom)	7.8	8	8.6	VDC
		24Vin(nom)	15.8	16	17.4	
		48Vin(nom)	32	33	34	
	4:1	24Vin(nom)	7.8	8	8.6	VDC
		48Vin(nom)	15.8	16	17.4	
Input Surge Voltage	3 Seconds, Max.	2:1			25	VDC
		24Vin(nom)			50	
	3 Seconds, Max.	4:1			50	VDC
		48Vin(nom)			100	
Input Current	No Load		See Table			
Input Filter			Pi Type			
OUTPUT SPECIFICATIONS						
Output Voltage			See Table			
Voltage Accuracy			-1.0		+1.0	%
Line Regulation	Low Line to High Line, Full Load	Single Outputs	-0.2		+0.2	%
		Dual Outputs	-0.5		+0.5	
Load Regulation	No Load to Full Load	Single Outputs	-0.2		+0.2	%
		Dual Outputs	-1.0		+1.0	
Voltage Adjustability	Single Outputs	5Vout, 12Vout	-10		+10	%
		15Vout, 24Vout	-10		+20	
Cross Regulation	Asymmetrical load 25%/100% FL	Dual Outputs	-5.0		+5.0	%
Output Power			See Table			
Output Current			See Table			
Maximum Capacitive Load			See Table			
Ripple & Noise (20MHz bandwidth)	With a 10µF/25V X7R MLCC	5Vout		50		mVp-p
	With a 10µF/25V X7R MLCC	12Vout		75		
	With a 10µF/25V X7R MLCC	15Vout		100		
	With a 4.7µF/50V X7R MLCC	24Vout		100		
	With a 10µF/25V X7R MLCC	±5Vout		50		
	With a 10µF/25V X7R MLCC	±12Vout		75		
	With a 10µF/25V X7R MLCC	±15Vout		75		
Transient Response Recovery Time	25% Load Step Change			250		µs
Start-Up Time	Constant Resistive Load	Power Up		30	60	mS
		Remote ON/OFF		30	60	
Temperature Coefficient			-0.02		+0.02	%/°C
REMOTE ON/OFF CONTROL⁽¹⁾ (Optional)						
Positive Logic	DC-DC ON		Open or 3.5~12VDC			
	DC-DC OFF		Short or 0~1.2VDC			
Negative Logic	DC-DC ON		Short or 0~1.2VDC			
	DC-DC OFF		Open or 3.5~12VDC			
Input Current of CTRL Pin			-0.5		1	mA
Remote OFF Input Current				2.5		mA
PROTECTION						
Short Circuit Protection			Continuous, Automatic Recovery			
Over Load Protection	% of Iout rated; Hiccup Mode			150	185	%
Over Voltage Protection	Zener Diode Clamp	5Vout		6.2		VDC
		12Vout		15		
		15Vout		20		
		24Vout		30		
Over Temperature Protection				115		°C

SPECIFICATIONS

All specifications are based on 25°C, Nominal Input Voltage, and Maximum Output Current unless otherwise noted.
We reserve the right to change specifications based on technological advances.

SPECIFICATION	TEST CONDITIONS	Min	Typ	Max	Unit
ENVIRONMENTAL SPECIFICATIONS					
Operating Ambient Temperature	With Derating	-40		+105	°C
Maximum Case Temperature				+105	°C
Storage Temperature		-55		+125	°C
Thermal Impedance			12.85		°C/W
Relative Humidity		5		95	%RH
Thermal Shock		MIL-STD-810F			
Vibration		MIL-STD-810F			
Operating Altitude				5000	m
MTBF	MIL-HDBK-217F, Full Load		1,137,000		Hours
GENERAL SPECIFICATIONS					
Efficiency		See Table			
Switching Frequency		225	250	285	kHz
Isolation Voltage	1 minute, Input to Output, Reinforced insulation for 250VAC working voltage	5000			VAC
Isolation Capacitance			20		pF
Leakage Current	240VAC, 60Hz		2	2.5	µA
Clearance/Creepage		8			mm
PHYSICAL SPECIFICATIONS					
Weight		1.13oz (32g)			
Dimensions (L x W x H)		2in x 1in x 0.40in (50.8mm x 25.4mm x 10.2mm)			
Case Material		Non-Conductive Black Plastic			
Base Material		Non-Conductive Black Plastic			
Potting Material		Silicone (UL94 V-0)			
SAFETY CHARACTERISTICS					
Safety Approvals ⁽³⁾		IEC/EN/ANSI/AAMI ES 60601-1 IEC/EN/UL 60950-1, 62368-1			UL CB:UL (Demko)
EMI	EN55011, EN55032, and FCC Part 18	Without External Components		Class A	
		With External Components		Class B	
ESD	EN61000-4-2	Air ± 15kV and Contact ±8kV			Perf. Criteria A
Radiated Immunity	EN61000-4-3	10 V/m			Perf. Criteria A
Fast Transient ⁽²⁾	EN61000-4-4	±2kV			Perf. Criteria A
Surge ⁽²⁾	EN61000-4-5	±2kV			Perf. Criteria A
Conducted Immunity	EN61000-4-6	10 Vr.m.s			Perf. Criteria A
Power Frequency Magnetic Field	EN61000-4-8	100A/m continuous; 1000A/m 1 Second			Perf. Criteria A

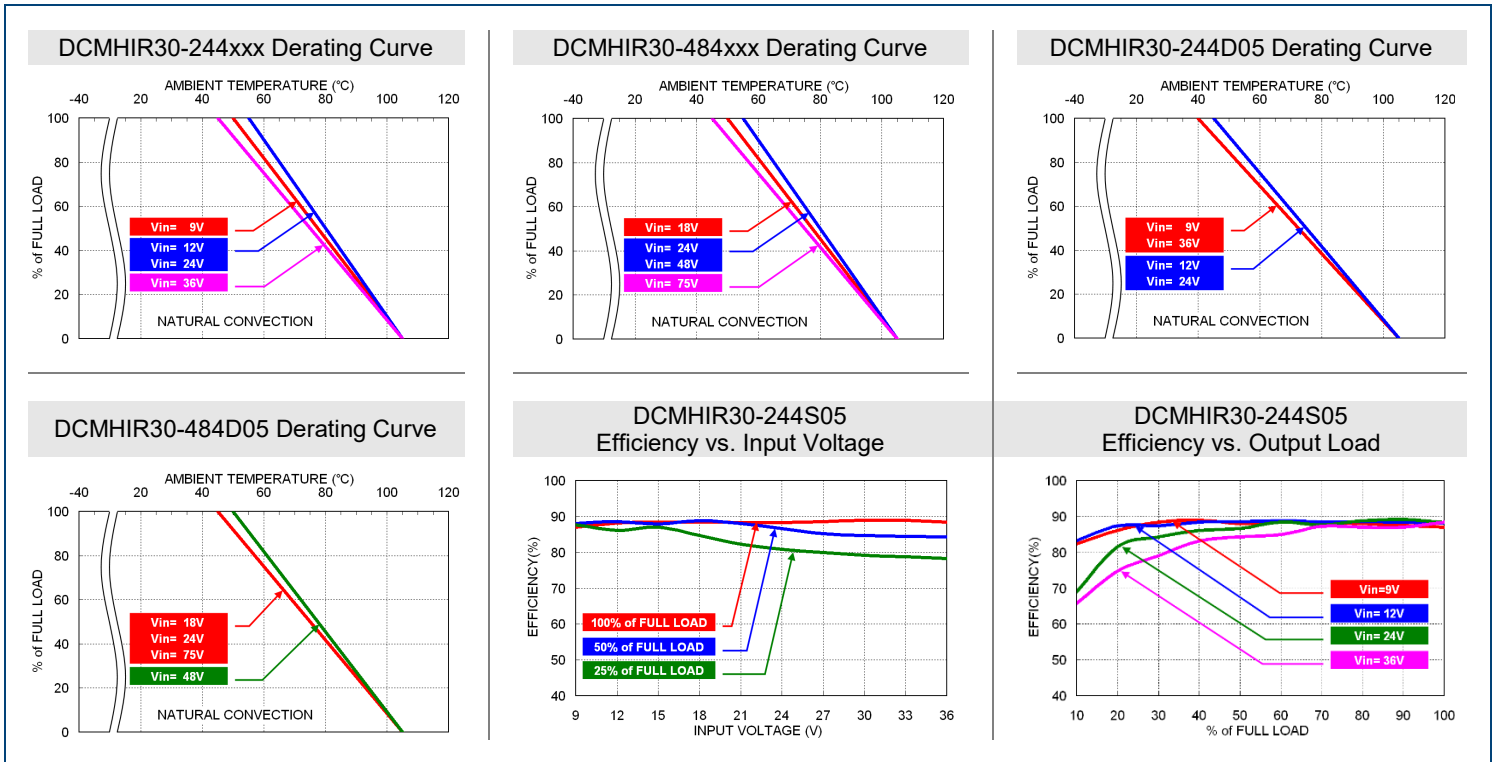
NOTES

- Referred to –Vin pin.
To order positive logic remote on/off, add the suffix “P” to the model number.
To order negative logic remote on/off, add the suffix “R” to the model number.
- DCMHIR30-12xxx: With 2pcs of aluminum electrolytic capacitor (Nippon chemi-con KY series, 220µF/100V) and a TVS (SMDJ36A, 36V, 3000 Watt peak pulse power) in parallel.
 - DCMHIR30-24xxxx: With 2pcs of aluminum electrolytic capacitor (Nippon chemi-con KY series, 220µF/100V) and a TVS (SMDJ58A, 58V, 3000 Watt peak pulse power) in parallel.
 - DCMHIR30-48xxxx: With 2pcs of aluminum electrolytic capacitor (Nippon chemi-con KY series, 220µF/100V) and a TVS (SMDJ120A, 120V, 3000 Watt peak pulse power) in parallel.
- This product is Listed to applicable standards and requirements by UL.

CAUTION: Power modules not internally fused. An input line fuse must always be used.

**Due to advances in technology, specifications subject to change without notice.*

CHARACTERISTIC CURVES



FUSE CONSIDERTION

This power module is not internally fused. An input line fuse must always be used. This encapsulated power module can be used in a wide variety of applications, ranging from simple stand-alone operation to an integrated part of sophisticated power architecture. To maximum flexibility, internal fusing is not included; however, to achieve maximum safety and system protection, always use an input line fuse. The input line fuse suggestion is below:

Model	Fuse Rating	Fuse Type
DCMHIR30-12xxx, DCMHIR30-244xxx	6.3A	Slow-Blow
DCMHIR30-24xxx, DCMHIR30-484xxx	3.15A	Slow-Blow
DCMHIR30-48xxx	1.6A	Slow-Blow

The table is based on information provided in the data sheet on inrush energy and maximum DC input current at low Vin.

MECHANICAL DRAWINGS

Pin Connection		
PIN	SINGLE	DUAL
1	+Vin	+Vin
2	-Vin	-Vin
3	Ctrl (Option)	Ctrl (Option)
4	+Vout	+Vout
5	-Vout	Common
6	Trim	-Vout

Notes:
 1. All dimensions in inch [mm]
 2. Tolerance: x.xx±0.02 [x.x±0.5]
 x.xxx±0.010 [x.xx±0.25]
 3. Pin dimension tolerance ±0.004 [0.10]

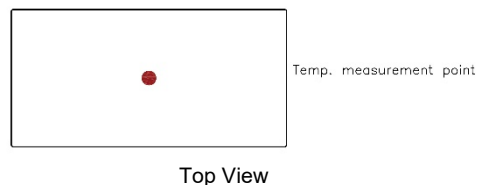
RECOMMENDED PAD LAYOUT

Note:
 All dimensions in inch [mm]
 Pad size (lead free recommended)
 Through hole 1.2.3.4.5.6: Ø0.051[1.30]
 Top view pad 1.2.3.4.5.6: Ø0.064[1.63]
 Bottom view pad 1.2.3.4.5.6: Ø0.102[2.60]

THERMAL CONSIDERATIONS

The power module operates in a variety of thermal environments. However, sufficient cooling should be provided to help ensure reliable operation of the unit. Heat is removed by conduction, convection, and radiation, to the surrounding environment. Proper cooling can be verified by measuring the point in the figure below. The temperature at this location should not exceed "Maximum Case Temperature". When operating, adequate cooling must be provided to maintain the test point temperature at or below "Maximum case temperature". You can limit this temperature to a lower value for extremely high reliability.

- Thermal test condition with vertical direction by natural convection (20LFM).



OUTPUT VOLTAGE ADJUSTMENT

It allows the user to increase or decrease the output voltage of the module.
This is accomplished by connecting an external resistor between the Trim pin and either the +Vout or -Vout pins.
With an external resistor between the Trim and -Output pin, the output voltage increases.
With an external resistor between the Trim and +Output pin, the output voltage decreases.
The external Trim resistor needs to be at least 1/16W of rated power.

•Trim Up Equation

$$R_u = \left[\frac{G \times L}{(V_{o,up} - L - K)} - H \right] \Omega$$

•Trim Down Equation

$$R_D = \left[\frac{(V_{o,down} - L) \times G}{(V_o - V_{o,down})} - H \right] \Omega$$

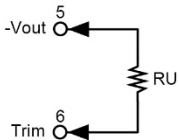
• Trim Constants

Model	G	H	K	L
5V Models	5110	2050	2.5	2.5
12V Models	10000	5110	9.5	2.5
15V Models	10000	5110	12.5	2.5
24V Models	56000	13000	21.5	2.5

EXTERNAL OUTPUT TRIMMING

Output can be externally trimmed by using the method shown below.

Trim Up



5V Models

ΔV (%)	1	2	3	4	5	6	7	8	9	10
Vout (V)	5.05	5.1	5.15	5.2	5.25	5.3	5.35	5.4	5.45	5.5
Ru (kΩ)	253.450	125.700	83.117	61.825	49.050	40.533	34.450	29.888	26.339	23.500

12V Models

ΔV (%)	1	2	3	4	5	6	7	8	9	10
Vout (V)	12.12	12.24	12.36	12.48	12.6	12.72	12.84	12.96	13.08	13.2
Ru (kΩ)	203.223	99.057	64.334	46.973	36.557	29.612	24.652	20.932	18.038	15.723

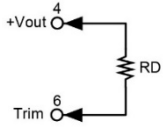
15V Models

ΔV (%)	1	2	3	4	5	6	7	8	9	10
Vout (V)	15.15	15.3	15.45	15.6	15.75	15.9	16.05	16.2	16.35	16.5
Ru (kΩ)	161.557	78.223	50.446	36.557	28.223	22.668	18.700	15.723	13.409	11.557
ΔV (%)	11	12	13	14	15	16	17	18	19	20
Vout (V)	16.65	16.8	16.95	17.1	17.25	17.4	17.55	17.7	17.85	18
Ru (kΩ)	10.042	8.779	7.711	6.795	6.001	5.307	4.694	4.149	3.662	3.223

24V Models

ΔV (%)	1	2	3	4	5	6	7	8	9	10
Vout (V)	24.24	24.48	24.72	24.96	25.2	25.44	25.68	25.92	26.16	26.4
Ru (kΩ)	570.333	278.667	181.444	132.833	103.667	84.222	70.333	59.917	51.815	45.333
ΔV (%)	11	12	13	14	15	16	17	18	19	20
Vout (V)	26.64	26.88	27.12	27.36	27.6	27.84	28.08	28.32	28.56	28.8
Ru (kΩ)	40.030	35.611	31.872	28.667	25.889	23.458	21.314	19.407	17.702	16.167

Trim Down



5V Models

ΔV (%)	1	2	3	4	5	6	7	8	9	10
Vout (V)	4.95	4.9	4.85	4.8	4.75	4.7	4.65	4.6	4.55	4.5
Ru (k Ω)	248.340	120.590	78.007	56.715	43.940	35.423	29.340	24.778	21.229	18.390

12V Models

ΔV (%)	1	2	3	4	5	6	7	8	9	10
Vout (V)	11.88	11.76	11.64	11.52	11.4	11.28	11.16	11.04	10.92	10.8
Ru (k Ω)	776.557	380.723	248.779	182.807	143.223	116.834	97.985	83.848	72.853	64.057

15V Models

ΔV (%)	1	2	3	4	5	6	7	8	9	10
Vout (V)	14.85	14.7	14.55	14.4	14.25	14.1	13.95	13.8	13.65	13.5
Ru (k Ω)	818.223	401.557	262.668	193.223	151.557	123.779	103.938	89.057	77.483	68.223

24V Models

ΔV (%)	1	2	3	4	5	6	7	8	9	10
Vout (V)	23.76	23.52	23.28	23.04	22.8	22.56	22.32	22.08	21.84	21.6
Ru (k Ω)	4947.667	2439.333	1603.222	1185.167	934.333	767.111	647.667	558.083	488.407	432.667

MODEL NUMBER SETUP

DCMHIR	30	-	12	S	05	P
Series Name	Output Power		Input Voltage	Output Quantity	Output Voltage	Remote On/Off & Pin Length
			12: 9~18VDC 24: 18~36VDC 244: 9~36VDC 48: 36~75VDC 484: 18~75VDC	S: Single D: Dual	05: 5VDC 12: 12VDC 15: 15VDC 24: 24VDC 05: ± 0.5 VDC 12: ± 1.2 VDC 15: ± 1.5 VDC	Blank: No Pin P: Positive Logic R: Negative Logic

COMPANY INFORMATION

Wall Industries, Inc. has created custom and modified units for over 50 years. Our in-house research and development engineers will provide a solution that exceeds your performance requirements on-time and on budget. Our ISO9001: 2015 certification is just one example of our commitment to producing a high quality, well-documented product for our customers.

Our past projects demonstrate our commitment to you, our customer. Wall Industries, Inc. has a reputation for working closely with its customers to ensure each solution meets or exceeds form, fit and function requirements. We will continue to provide ongoing support for your project above and beyond the design and production phases. Give us a call today to discuss your future projects.

Contact **Wall Industries** for further information:

Phone: ☎ (603)778-2300
Toll Free: ☎ (888)597-9255
Fax: ☎ (603)778-9797
E-mail: sales@wallindustries.com
Web: www.wallindustries.com
Address: 37 Industrial Drive
Exeter, NH 03833

©2019 Wall Industries, Inc. Specifications subject to change without notice. Wall Industries is not responsible for typographical errors. The information contained herein is for informational purposes only. This information is provided by Wall Industries and we make no representations or warranties of any kind, express or implied, about the completeness, accuracy, reliability, suitability or availability with respect to the information contained in this document for any purpose. All product and manufacturer names are trademarks or registered trademarks of their respective companies.