

Wall Industries, Inc.

DCHF350 SERIES

2:1 Input Voltage Range
12 & 24 VDC Single Outputs
330~350W Output Power
DC/DC Chassis Mount Power Converters



FEATURES

- RoHS Compliant
- $\pm 10\%$ Voltage Adjustment Range
- 2:1 Input Voltage Range
- Built-in Fan
- Built-in Remote Sense (Option)
- Remote ON/OFF Control (Option)
- 330~350W Output Power
- 12VDC and 24VDC Single Outputs Voltages
- 100% Full Load Burn-in Tested
- Dimensions: 8.46 x 4.53 x 1.97 Inches
- Short Circuit, Over Voltage, Over Load, and Over Temperature Protected

DESCRIPTION

The DCHF350 series of DC/DC power converters offers up to 350W output power in an 8.46 x 4.53 x 1.97 enclosed case. This series has 12VDC and 24VDC single output models with 2:1 input voltage ranges of 19-36VDC, 36-72VDC, and 72-144VDC. Some features include $\pm 10\%$ output adjustability, remote sense (optional), remote ON/OFF control (optional), and a built-in fan. These supplies are RoHS compliant and are protected against short circuit, over voltage, over load, and over temperature conditions. All supplies in this series are 100% full load burn-in tested.

SPECIFICATIONS: <i>DCHF350 Series</i>						
<p>All specifications are based on 25°C, Nominal Input Voltage, and Maximum Output Current unless otherwise noted. We reserve the right to change specifications based on technological advances.</p>						
SPECIFICATION	TEST CONDITIONS		Min	Nom	Max	Unit
INPUT SPECIFICATIONS						
Input Voltage Range	24VDC nominal input models		19	24	36	VDC
	48VDC nominal input models		36	48	72	
	110VDC nominal input models		72	110	144	
Remote ON/OFF Control			optional			
OUTPUT SPECIFICATIONS						
Output Voltage			See Table			
Output Voltage Adjustment Range			-10		+10	%
Line Regulation	Full load		≤ -0.5		≤ +0.5	%
Load Regulation			≤ -0.5		≤ +0.5	%
Output Current			See Table			
Output Power			See Table			
Ripple & Noise			See Table			
Remote Sense			optional			
PROTECTION						
Over Voltage Protection			115		150	% Vo
Over Load Protection			110		130	% Io
Short Circuit Protection			Yes			
Over Temperature Protection			Yes			
GENERAL SPECIFICATIONS						
Efficiency			See Table			
Withstand Voltage	Input to Output	All for 1 minute	1000			VDC
	Input to FG		1000			
	Output to FG		500			
Isolation Resistance	At 500VDC		> 100			MΩ
ENVIRONMENTAL SPECIFICATIONS						
Operating Temperature			-10		+50	°C
Storage Temperature			-20		+85	°C
Cooling Method			Fan			
PHYSICAL SPECIFICATIONS						
Dimensions (L x W x H)			8.46 x 4.53 x 1.97 inches (215 x 115 x 50 mm)			
Weight			2.4 lbs (1100g)			
SAFETY & EMC CHARACTERISTICS						
Safety Standards			Design refer to LVD			
EMC Standards			Design refer to EN55022, EN61000-4			

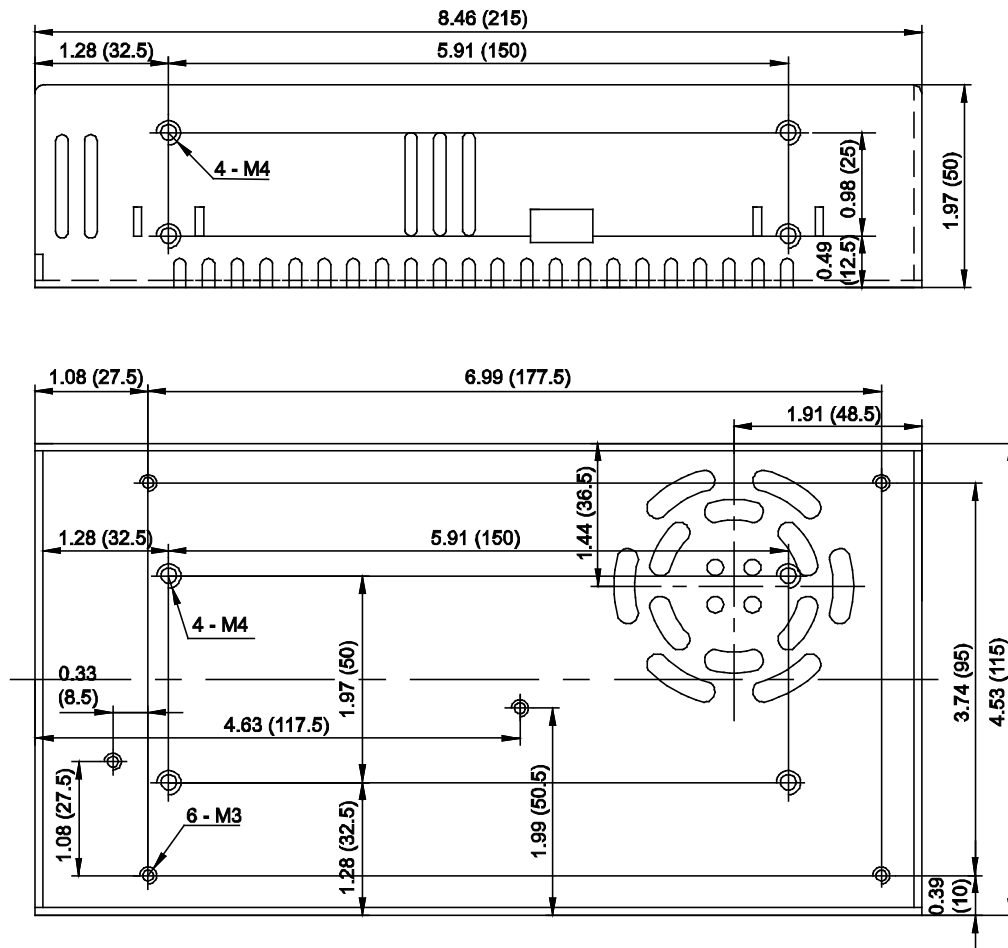
Due to advances in technology, specifications are subject to change without notice.

MODEL SELECTION TABLE

Model Number	Input Voltage	Output Voltage	Output Current	Ripple & Noise	Output Power	Efficiency
DCHF350W-SMD24-12	24 VDC (19 - 36 VDC)	12 VDC	27.5 A	120mVp-p	330W	80%
DCHF350W-SMD24-24		24 VDC	14.6 A	150mVp-p	350W	80%
DCHF350W-SMD48-12	48 VDC (36 - 72 VDC)	12 VDC	27.5 A	120mVp-p	330W	81%
DCHF350W-SMD48-24		24 VDC	14.6 A	150mVp-p	350W	81%
DCHF350W-SMD110-12	110 VDC (72 - 144 VDC)	12 VDC	29.2 A	120mVp-p	350W	83%
DCHF350W-SMD110-24		24 VDC	14.6 A	150mVp-p	350W	87%

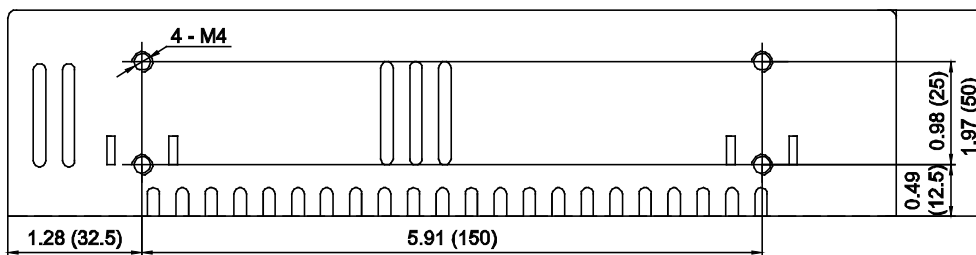
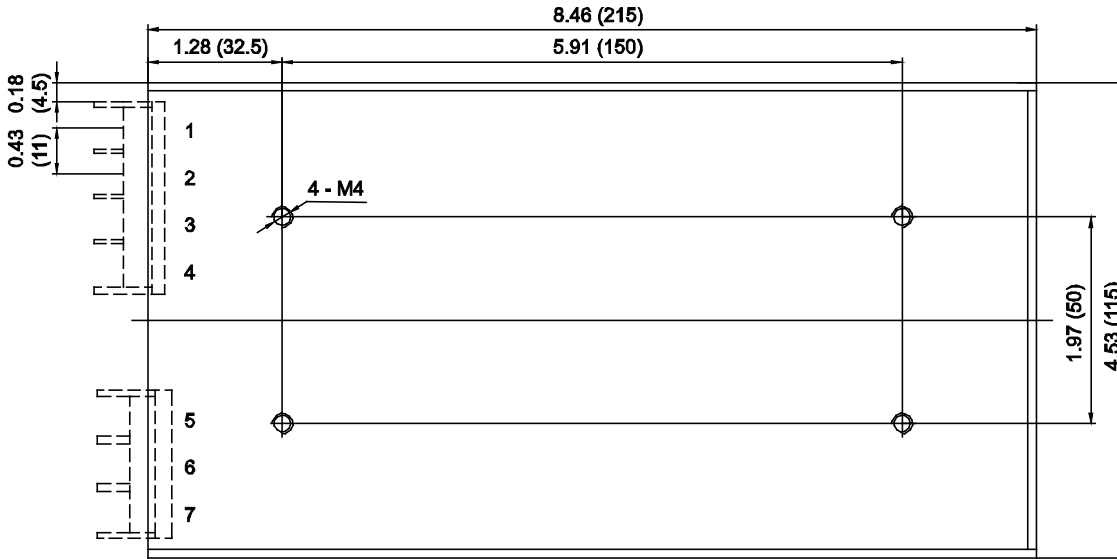
MECHANICAL DRAWING

Unit: inches (mm)

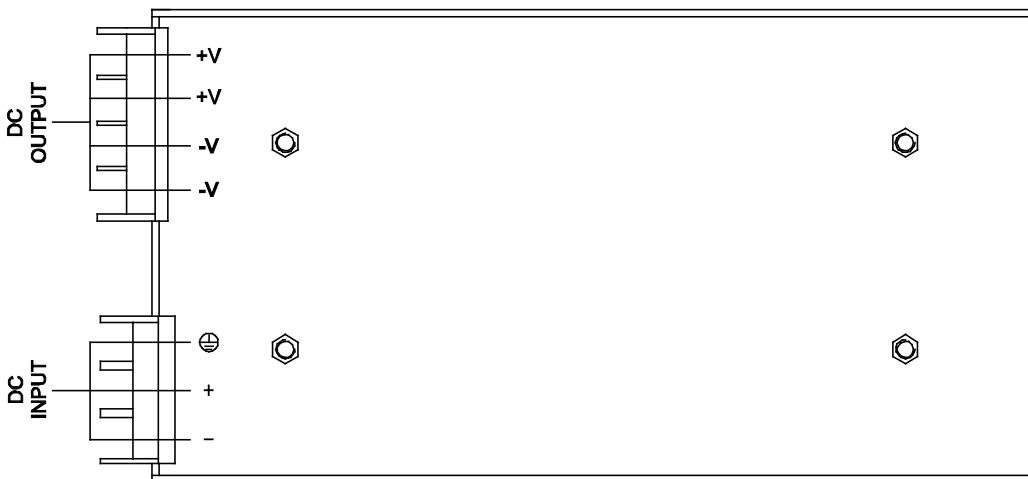


PIN CONNECTIONS

Unit: inches (mm)



PIN CONNECTIONS	
Pin No	Assignment
1, 2	DC Output (V+)
3, 4	DC Output (V-)
5	FG
6	DC Input (V+)
7	DC Input (V-)
Screw Size: M4*6	





Wall Industries, Inc.

Rev. C

DCHF350 Series
350W, Single Output
2:1 Input Voltage Range
DC/DC Chassis Mount Converters

COMPANY INFORMATION

Wall Industries, Inc. has created custom and modified units for over 50 years. Our in-house research and development engineers will provide a solution that exceeds your performance requirements on-time and on budget. Our ISO9001 certification is just one example of our commitment to producing a high quality, well-documented product for our customers.

Our past projects demonstrate our commitment to you, our customer. Wall Industries, Inc. has a reputation for working closely with its customers to ensure each solution meets or exceeds form, fit and function requirements. We will continue to provide ongoing support for your project above and beyond the design and production phases. Give us a call today to discuss your future projects.

Contact **Wall Industries** for further information:

Phone: ☎(603)778-2300
Toll Free: ☎(888)597-9255
Fax: ☎(603)778-9797
E-mail: sales@wallindustries.com
Web: www.wallindustries.com
Address: 37 Industrial Drive
Exeter, NH 03833

©2019 Wall Industries, Inc. Specifications subject to change without notice. Wall Industries is not responsible for typographical errors. The information contained herein is for informational purposes only. This information is provided by Wall Industries and we make no representations or warranties of any kind, express or implied, about the completeness, accuracy, reliability, suitability or availability with respect to the information contained in this document for any purpose. All product and manufacturer names are trademarks or registered trademarks of their respective companies.