
QAW Series dc/dc Converters

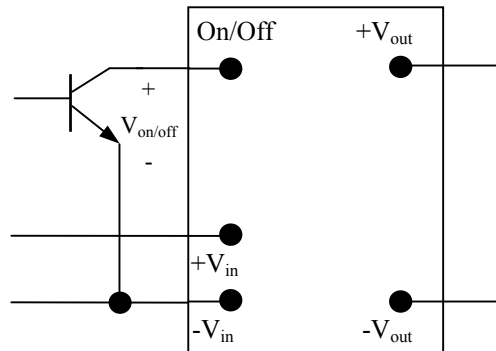
Remote ON / OFF Control

Description:

The QAW Series dc/dc converters allow remote operation via the Remote On/Off signal pin (Pin 5). The Remote On/Off function is controlled by a positive logic TTL signal. When a logic-high voltage is present on the Remote On/Off pin the module output is enabled. A logic-low signal on the Remote On/Off pin will disable the module output.

The Remote On/Off pin is pulled high internally so by default the module output is enabled. To disable the output voltage the Remote On/Off pin must be pulled low. A logic-low voltage is any voltage between 0V and 1.2V as referenced to the negative input voltage ($-V_{in}$). The switch should maintain a logic-low voltage while sinking 1 mA minimum, 5 mA maximum. During a logic-high, the maximum voltage on the Remote On/Off pin generated by the module is 5V ($V_{on/off}$).

If you are not planning on using the Remote On/Off function we recommend you leave the Remote On/Off pin (Pin 5) open.



Typical Remote On/Off Application