

MILITARY POWER SOLUTIONS

Wall Industries is a global technology enterprise founded in 1960. Our hallmark is our ability to modify standard power devices and deliver high-performing, custom power solutions in the quantities you require. We offer complete design and engineering services, short turn-around times and a genuine eagerness to help your projects succeed.

From the simplest to the most complex requirements, Wall solves your standard, modified standard, and custom power needs. For over 50 years the world's most well-known OEMs continue to trust Wall to provide thousands of reliable power products. Wall Industries specializes in meeting the needs of our customers with custom and modified dc/dc converters and ac/dc power supplies as well as military power solutions.

MILITARY REQUIREMENTS

At Wall our thorough design, design verification and screening capabilities offer our customers military, quasi-military and COTS (commercial off the shelf) qualified power solutions.

Our capabilities include the following Mil standards:

Mil-Std-704	Aircraft Power Standards
Mil-Std-1399	Shipboard Standards
Mil-Std-1275	Military Vehicle Standards
Mil-Std-461	Electro Magnetic Emissions Requirements
Mil-Std-217	MTBF Standards
Mil-Std-810	Environmental Testing
Mil-Std-202	Standardized Test Methods

-55°C to +125°C operating temperatures available upon request

Wall Industries also offers an array of screening options to meet both the needs set forth by Military Standards, and those set by individual customer requirements.

ADDITIONAL CAPABILITIES

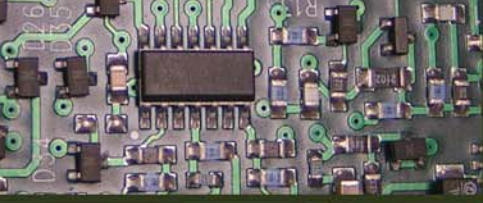
- 3D Mechanical Modeling based on COTS units
- Pre-Compliance Testing
- Analog design for input and output circuits

5 Watson Brook Road
Exeter, NH 03833
e-mail: sales@wallindustries.com
Web: www.wallindustries.com

Tel: 603-778-2300
Toll Free: 888-597-9255
Fax: 603-778-9797

888-597-9255

WALL[®]
Wall Industries, Inc.



Successful Military Power Products

LV & DCHBW Series



Input Voltage Range: 10-36, 16.5-75, 43-160 VDC
Output Voltage Available: 5, 12, 15, 20, 24, 26, 28, 48 VDC
Output Power: 200 Watts
Operating Temp.: -40°C to +100°C
Dimensions (L x W x H): 2.3" x 2.4" x 0.5"
External Trim Range: ±10%
Remote Sense & Remote On/Off

FEMLV (Front End Module)



Input Voltage Range: 10-36 VDC
Output Power: 150 Watts
Operating Temp.: -40°C to +100°C
Dimensions (L x W x H): 2.36" x 1.54" x 0.51"
Mil-Std-1275D 28V Vehicle Electrical System Compliance
Voltage Surge and Spike Filtering
Designed for LV Series

SPW Series



Input Voltage Range: 18-75 VDC
Output Voltage Available: 3.3, 5, 12, 15, 24, 48 VDC
Output Power: up to 100 Watts
Operating Temp.: -40°C to +100°C
Dimensions (L x W x H): 2.3" x 2.4" x 0.5"
External Trim Range: ±10%
Remote Sense & Remote On/Off

Custom Capabilities



Wall has solved many challenging scenarios when equipment needed to serve in the desert with scorching temperatures or at sea with elements of vibration, salt air, and ocean water. In all cases, Wall partnered to strategize, design, and deliver power in hardened, encapsulated, and ruggedized equipment. Wall offers an array of screening options to meet both the needs set forth by Military Standards, and those set by individual customer requirements.

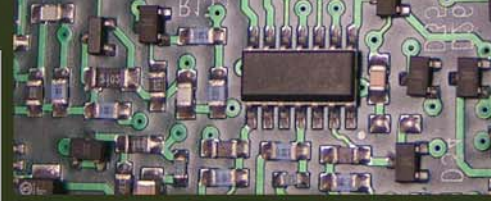
DC/DC CONVERTERS

Wall offers one of the most comprehensive product offerings in the converter industry, with power ranging from 1 watt to 600 Watts. We offer standard products: high density designs, complete brick family: 1/8, 1/4, 1/2, and full brick. Features include 2:1 and 4:1 input ranges, high efficiencies up to 93%, with single and multiple outputs. Additional options include remote on/off, continuous short circuit protection, remote sense, external trim, and synch options.

AC/DC POWER SUPPLIES

With power ranges from 1 to 3000 Watts, these high reliability power supplies are available in open card, cased, and in some series, encapsulated. Features include universal input, soft start, single and multiple outputs. All open card and cased switchers are agency approved.

Custom Modifications are our Specialty!
Call us for more Information!
888-597-9255



Additional Product Series

DC/DC Converters

- Encapsulated
- PC Board Mount
- Surface Mount
- Chassis Mount
- Through Hole
- Open Frame

AC/DC Power Supplies

- Open Frame
- Air Ventilated Enclosed
- U-Frame
- Enclosed with Fan
- Wall Plug-In
- Desktop
- Encapsulated
- DIN Rail

WALL INDUSTRIES, INC.
 5 Watson Brook Road
 Exeter, NH 03833

888-597-9255
 sales@wallindustries.com
 www.wallindustries.com

888-597-9255

WALL

Wall Industries, Inc.